



MIDWAY PRODUCTS GROUP, INC.

**A proven solution partner with design,  
engineering and manufacturing innovation.**

**Corporate Headquarters  
One Lyman E. Hoyt Drive • Monroe, MI 48161  
734.241.7242  
[www.midwayproducts.com](http://www.midwayproducts.com)**



## **Our Mission**

Midway's carefully planned strategic growth over the past 50 years, coupled with our continuous improvement and lean manufacturing principles and management systems, has enabled Midway Products Group, Inc. to remain a strong and vibrant partner to our valued customers and to build on the solid foundation for continued growth in the years to come.

**Our top priorities ... quality and excellence**  
We strive for excellence in everything we do, utilizing the principles of continuous rapid improvement. We create a corporate culture for innovation.

**Our most valued resource ... our people**  
We encourage, promote, and develop the abilities and skills of each individual to their maximum potential. We provide a safe environment and a culture that fosters employee participation, teamwork, trust and respect.

**Our focus ... our customers**  
We provide the best products and unsurpassed services. We listen to the voice of the customer and anticipate and fulfill their needs.

**Our partnerships ... our suppliers and community**  
We treat our suppliers as partners in business. We are responsible, corporate citizens in our community.

Visite [www.midwayproducts.com](http://www.midwayproducts.com) para ver este catálogo en español.  
Diese Broschüre finden Sie in deutscher Sprache unter [www.midwayproducts.com](http://www.midwayproducts.com).  
このパンフレットの日本語版は [www.midwayproducts.com](http://www.midwayproducts.com) でご確認いただけます。



# MIDWAY PRODUCTS GROUP, INC.

**A proven solution partner with design, engineering and manufacturing innovation.**

Midway Products Group, Inc. provides best-in-class products and services that meet or exceed customer expectations through our commitment to continuous improvement, leading to the prosperity of our people, our customers, our suppliers and our community.



## **Continuous Improvement**

Since 1992, Midway has implemented continuous improvement techniques and cost reduction strategies. Each plant has specific objectives related to safety, quality and processes. We strive for excellence in everything we do.

## **Team-Based Culture**

We encourage, promote, and develop the abilities and skills of each individual to their maximum potential. We provide a safe environment and a corporate culture for innovation that fosters employee participation, teamwork, trust and respect.



## **Customer Focused**

We listen to the voice of the customer, and anticipate and fulfill their needs. We pride ourselves on fast turnaround for new projects and immediate response to customer issues. We provide the highest quality products and unsurpassed services.



## **Valued Partnerships**

We treat our suppliers as partners in business, and ensure our supplier base follows our standards of quality and innovation. Our supplier partnerships are an integral part of our operations.

# Innovation and Service

## R&D, Design, Engineering and Testing

Midway is customer-focused. Midway's talented designers and engineers are always seeking ways to improve processes, investigate the best materials and assure the superior quality of your new or existing products. We work with you, from concept to prototype to production. We can help you meet challenging cost parameters, or simply help you find a better way.

As part of your team, we facilitate your project through research, concept development, design of functional prototypes, tooling, feasibility studies, modeling, testing and problem solving. We realize that quality and cost are

important, and are concerned with improvement to processes, including automation to reduce operator errors, reducing expensive quality issues and improving materials to save money. We're committed to the partnership and to your bottom line success.

In addition, Midway provides customers with "customer advocates" to ensure instant response to issues. Our response time is immediate, and the advocate is there to help solve the problem, even if the issue is unrelated to Midway. Midway Products Group is your full service supplier.



## Quality Goals

### Advance Quality Planning

The Midway commitment to quality and continuous improvement is the best way to assure that our customers, our people, our suppliers and our communities continue to grow and prosper.

Midway's quality goals include maintaining customer satisfaction, achieving an outstanding, single-digit parts per million (PPM) defect rate, reducing manufacturing costs, and closely monitoring supplier performance. Midway holds quality registrations for ISO TS 16949, meets all industry

quality and technical standards, and we continue to be honored by our customers for our quality performance.

To assure that all Midway products bring quality and value to our customers, we have created a team to evaluate the product manufacturing processes, material usage, packaging, corrosion resistance requirements and product simplifications. You'll find this process greatly benefits your quality, reputation and profitability.

# Advanced Facilities

## Manufacturing Capabilities

Midway's advanced facilities, extensive equipment and superior systems provide customers with stamping and assembly products. Skilled operators, along with teamwork concepts and statistical analysis, combine to ensure consistency and optimum performance. We ensure productivity even further by making sure our facilities are equipped with the best machinery. Modern stamping presses, automatic welding technology and the use of vision robotics result in the highest levels of quality, flexibility and efficiency.



### Stamping, Robotics

We offer state-of-the-art mechanical press control packages, modern transfer and progressive stamping presses, automatic coil feeds, and precise robotic controllers to ensure you receive high quality stampings and assemblies.

Midway Products has used stamping for products including:

- Headers and roof bows
- Engine, console and chassis brackets
- Subframes
- Floor pan assemblies
- Floor pan and radiator supports
- Heat shields
- Drive plates and flex plates
- Hinges
- Door beams
- AHSS material
- Tow systems
- Oil pans

### Machining

Midway Products has the capability to perform machining operations with our CNC Lathes. These highly flexible machines can cut material when the designs require precise accuracy and small tolerances. These, along with our balance and in-line weld equipment, are ideal for manufacturing the following products:

- Drive plates
- Flex plates
- Other precise tolerance engine and transmission equipment

### Roll Forming

When the project requires roll forming, drawing, blanking or piercing, Midway's facilities can supply all of these processes, as well as any secondary operations, including drilling, tapping, deburring, riveting and a variety of welding processes. Midway has used roll forming for products such as the following:

- Sliding door tracks
- Drip rails, crossmembers and roof rails
- Tow systems
- Window frames
- Glass channels
- Sills
- Door beams
- AHSS material

### Assembly Operations

Midway is capable of performing a variety of welding processes, including resistance, robotic spot welding, projection welds, hard and flexible automated spot welds, hard and flexible automated, and manual welds. Additional applications include metal clinching, spin riveting, heat staking, bonding and flexible tooling. Midway runs computer-controlled tooling to ensure the highest levels of quality, efficiency, flexibility and safety, with capabilities including quick-change tooling, laser sensors, vision systems, Fiber laser cutting and pressure differential

sensors. Midway Products manufactures many automotive components, including the following:

- Hinges and latches
- Decklids
- Door lift gates and hoods
- Assemblies for sliding door tracks and rollers
- Fuel tank straps



### **Hydroforming**

Midway Products has preform and hydroform capabilities, with a 5,500-ton variable pressure Schuler hydroform press. Midway has produced a variety of products using hydroforming, including front-end structure modules, front body rails, roof rails, closures, d-pillars and tow systems.



### **Paint Line**

As a premier coatings applicator, Midway Products provides the technology, leadership and ability to do both e-coat and powder coat in-house, serving a broad spectrum of the automotive industry. Electro-coating readily conforms to complex configurations and yet maintains engineered tolerances on parts, ensuring intended operating functions. Midway's paint line coats internal surfaces, deep recesses, fasteners and all sizes of parts with a uniform coating, with no sags or runs.



### **Testing**

The Midway Products commitment to quality and continuous improvement is demonstrated by the in-house testing at our facilities. The comprehensive quality testing measures help us deliver the right part, built the right way, to perform well under rigorous use. Midway's testing facilities are ISO TS 16949 certified. Capabilities include durability and cycle testing, load and tensile testing, environmental and salt spray tests.



### **Green Initiatives**

Midway is striving to be the industry leader in energy efficiency. Through our implementation of wind turbines, solar panels and energy recycling, Midway's total energy policy lessens energy consumption and reduces operating costs. Within just a few years of the green initiative, Midway expects to reduce outside energy consumption by 55 percent. Midway is building efficiencies into all aspects of the business model, seeking to reduce our carbon footprint, while allowing us to remain viable and self-reliant into the future.



# MIDWAY PRODUCTS GROUP, INC.



## LOCATION

One Lyman E. Hoyt Dr.  
Monroe, MI 48161  
Phone: 734.241.7242  
Fax: 734.384.0811

## CORPORATE HEADQUARTERS

- Product Design and Development
- Advanced Engineering and Estimating
- Process and Tooling Engineering
- Industrial Engineering
- Training Center
- Corporate Accounting
- Packaging Engineering
- Human Resources
- Corporate Quality
- Program Management
- Prototype Development Center
- Certified Testing Lab
- Corporate Purchasing
- Corporate Manufacturing
- Materials and Logistics
- Computer Information Systems/EDI Support
- Sales and Marketing
- Safety and Environmental Management



ISO/IEC 17025:2005  
ISO/TS 16949:2009  
ISO 14001:2004



# MIDWAY PRODUCTS GROUP, INC.



## LOCATION

40 Seminary Street  
Greenwich, Ohio 44837

ISO/IEC 17025:2005  
ISO/TS 16949:2009  
ISO 14001:2004

## LAKEPARK INDUSTRIES, INC.

**Plant Size:** 200,000 square feet

**Plant Start-up:** 1986

**Press Capacity:** 25 presses/Up to 600 tons

**Press Bed Capacity:** Up to 120" x 60"

**Automatic Coil Feed Width:** Up to 48"

**Complete Tool Room Capability**

**CMM Capability**

### PRIMARY OPERATIONS

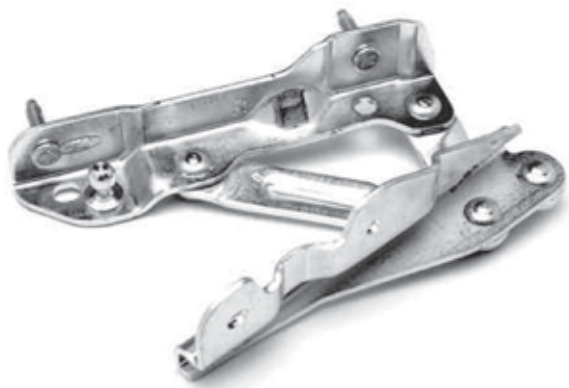
Die Stamping, Deep Draw, Tube Bending,  
Stud Welding, Blanking, Automated Assembly,  
Spot Welding, Robotic ARC Welding

### SECONDARY OPERATIONS

Drilling, Tapping, Grinding, Machining,  
Deburring, Riveting, Staking







4 Bar Link Decklid Hinge Assembly



Package Tray Support Panel



Engine Mount Strap



Liftgate Hinge Assembly



Gooseneck Decklid Hinge Assembly



Fuse Junction Panel Bracket



# MIDWAY PRODUCTS GROUP, INC.



## LAKEPARK INDUSTRIES OF INDIANA, INC.

**Plant Size:** 215,000 square feet

**Plant Start-up:** 1989

**Press Capacity:** 25 Presses/Up to 1,000 tons

**Press Bed Capacity:** Up to 156" x 72"

**Automatic Coil Feed Width:** Up to 60"

**Fully Automatic 72" Oscillating Shear Line**

**Complete Tool Room Capability**

**CMM Capability**

### PRIMARY OPERATIONS

Die Stamping, Deep Draw, Automated Assembly, Spot Welding, Robotic ARC Welding, Tube Bending, Part Washing

### SECONDARY OPERATIONS

Drilling, Tapping, Grinding, Machining, Deburring, Riveting, Staking

### LOCATION

750 E. Middlebury Street  
Shipshewana, Indiana 46565



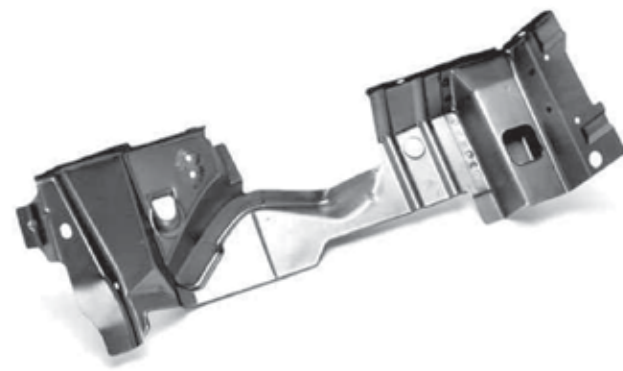
ISO/IEC 17025:2005  
ISO/TS 16949:2009  
ISO 14001:2004



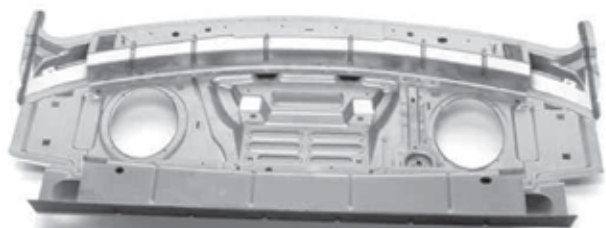
B-Pillar Assembly



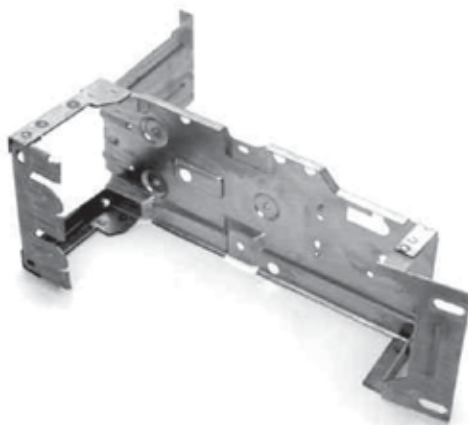
Body Side Window Frame



Package Tray Support



Package Tray Assembly



Center Console Bracket Assembly



Floor Pan Side Support



# MIDWAY PRODUCTS GROUP, INC.



## LOCATION

200 Progressive Drive  
Ottoville, Ohio 45876

## PROGRESSIVE STAMPING, INC.

**Plant Size:** 350,000 square feet

**Plant Start-up:** 1999

**Press Capacity:** 18 Presses/Up to 2,000 ton Transfer Press

**Press Bed Capacity:** Up to 240" x 96"

**Automatic Coil Feed Width:** Up to 72"

**Complete Tool Room Capability**

**CMM Capability**

### PRIMARY OPERATIONS

Die Stamping, Deep Draw, Automated Assembly, Robotic ARC Welding, Spot Welding, Hydroforming, E-Coat/Powder Coat Line

### SECONDARY OPERATIONS

Drilling, Tapping, Grinding, Machining, Deburring, Riveting, Staking



ISO/IEC 17025:2005  
ISO/TS 16949:2009  
ISO 14001:2004



Subframe Assemblies



B-Pillar Assembly



Jack Bracket



PDB Bracket



Oil Pan



# MIDWAY PRODUCTS GROUP, INC.



## LOCATION

105 W. State Rd. 4  
Hudson, Indiana 46747

ISO/IEC 17025:2005  
ISO/TS 16949:2009  
ISO 14001:2004

## HUDSON INDUSTRIES, INC.

**Plant Size:** 190,000 square feet

**Plant Start-up:** 1990

**Press Capacity:** 20 Presses/Up to 600 tons

**Press Bed Capacity:** Up to 144" x 72"

**Automatic Coil Feed Width:** Up to 60"

**Complete Tool Room Capability**

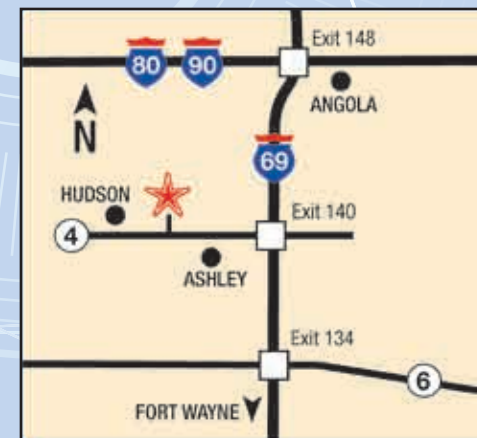
**CMM Capability**

### PRIMARY OPERATIONS

Die Stamping, Deep Draw, Roll Forming,  
Automated Assembly, Robotic ARC Welding,  
Tube Bending, Spot Welding

### SECONDARY OPERATIONS

Drilling, Tapping, Grinding, Machining,  
Deburring, Riveting, Staking





Engine Mount Support Assembly



Radiator Headers and Slide Supports



Single Pivot Hood Hinge



Trailer Hitch Assembly



Gas Tank Straps



# MIDWAY PRODUCTS GROUP, INC.



## LOCATION

2045 Industrial Drive  
Findlay, Ohio 45840

## FINDLAY PRODUCTS CORP.

**Plant Size:** 245,500 square feet

**Plant Start-up:** 1996

**Press Capacity:** 20 Presses/Up to 2,000 ton  
Transfer Press

**Press Bed Capacity:** Up to 240" x 96"

**Automatic Coil Feed Width:** Up to 72"  
60" Shear Line

**Complete Tool Room Capability**

**CMM Capability:** Wire EDM Capability

### PRIMARY OPERATIONS

Die Stamping, Deep Draw, Automated  
Assembly, Robotic ARC Welding, Spot Welding,  
Machining

### SECONDARY OPERATIONS

Drilling, Tapping, Grinding, Machining,  
Deburring, Riveting, Staking



ISO/IEC 17025:2005  
ISO/TS 16949:2009  
ISO 14001:2004

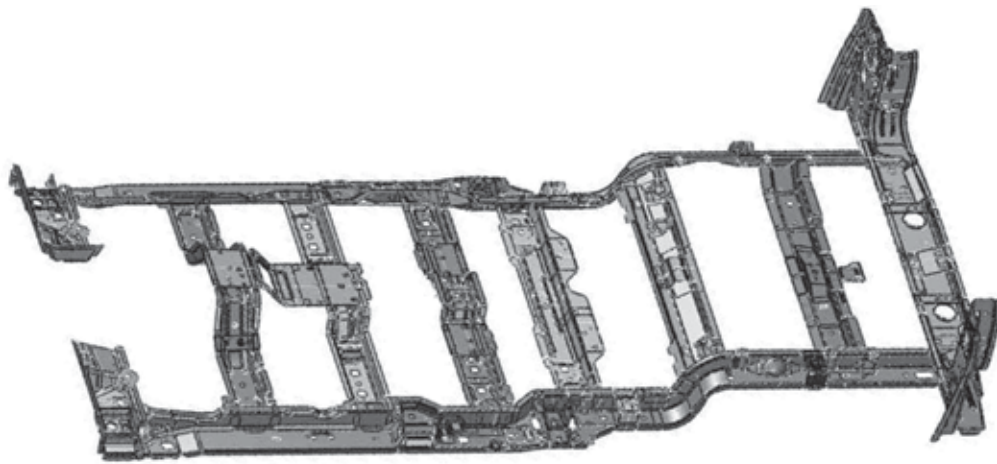




Flex and Drive Plates



B-Pillar Assembly



Underbody Assembly



Front Fender Inner



# MIDWAY PRODUCTS GROUP, INC.



## LOCATION

600 Crystal Avenue  
Findlay, Ohio 45840

ISO/IEC 17025:2005  
ISO/TS 16949:2009  
ISO 14001:2004

## P&A INDUSTRIES, INC.

**Plant Size:** 160,000 square feet

**Plant Start-up:** 1983

**Press Capacity:** 20 Presses/Up to 1,000 tons

**Press Bed Capacity:** Up to 144" x 72"

**Automatic Coil Feed Width:** Up to 48"

**Complete Tool Room Capability**

**CMM Capability**

### PRIMARY OPERATIONS

Die Stamping, Deep Draw, Tube Bending,  
Automated Assembly, Roll Forming, Robotic  
ARC Welding, Spot Welding

### SECONDARY OPERATIONS

Drilling, Tapping, Grinding, Machining,  
Deburring, Riveting, Staking





Gooseneck Decklid Hinge Assembly



Tailgate Latch Assembly



Trailer Hitch Assembly



Radiator Support Assembly



Tailgate Latch Release Assembly



Sliding Door Center Hinge Assembly



# MIDWAY PRODUCTS GROUP, INC.



## LOCATION

200 Sugar Grove Lane  
Columbus Grove, Ohio  
45830

## PRODUCTION PRODUCTS, INC.

**Plant Size:** 225,000 square feet

**Plant Start-up:** 2005

**Press Capacity:** 7 Presses/Up to 2,800 ton  
Transfer Press

**Press Bed Capacity:** Up to 300" x 110"

**Automatic Coil Feed Width:** Up to 78"

**Complete Tool Room Capability**

**CMM Capability**

### PRIMARY OPERATIONS

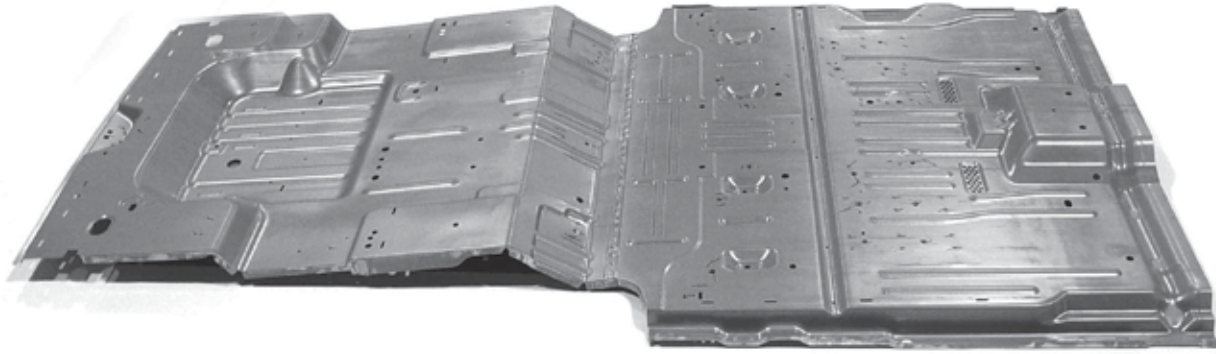
Die Stamping, Deep Draw, Automated  
Assembly, Robotic Spot Welding

### SECONDARY OPERATIONS

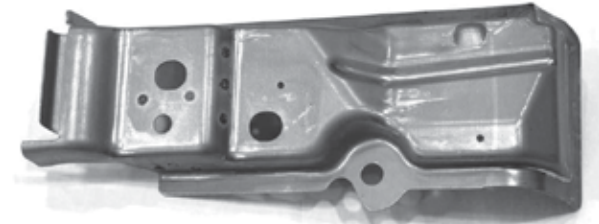
Drilling, Tapping, Grinding, Machining,  
Deburring, Riveting, Staking



ISO/IEC 17025:2005  
ISO/TS 16949:2009  
ISO 14001:2004



Floor Pan



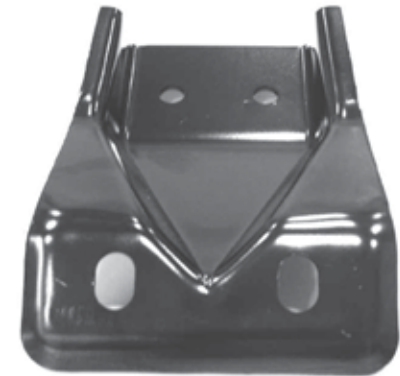
Crossmember



Wheelhouse



Side Sill



Transmission Bracket